

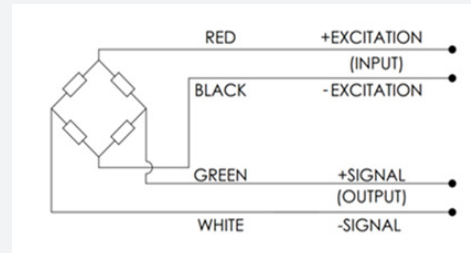
Clamping Force Load Cells are strain gauge based transducers with temperature compensation and excellent overall performance.

This type measures compressive loads up to 160kN with better than $\pm 2\%$ non-linearity. This low height and robust design is ideal for determining bolt preload.



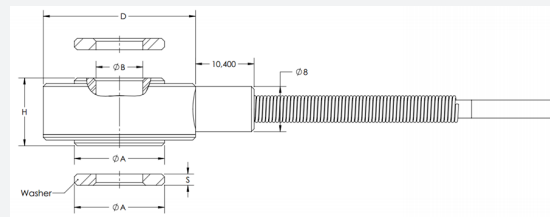
WIRING

- The load button is provided with 4x28 AWG wiring within a braided shielded cable (overall cable length 3m).
- Connector with integrated TEDS chip is available to order.



DIMENSIONS

MODEL	CAPACITY	A	B	D	H	S	THREAD
CFCL1	15kN	12	6.3	24	12	3	M6
CFCL1	30kN	16	8.3	27	12	3	M8
CFCL1	60kN	22	10.3	33	12	3	M10
CFCL1	80kN	26	12.3	37	15	4	M12
CFCL1	120kN	33	16.3	44	15	4	M16
CFCL1	160kN	39	20.3	50	15	5	M20



SPECIFICATION

PARAMETER	RANGE	NOTES
Capacity (FS)	15, 30, 60, 80, 120 & 160kN	
Rated Output (RO)	1mV/V nom.	
Allowable Maximum Load	150% full scale	No effect on performance
Non-Linearity	± 2% of FS	
Hysteresis	± 2% of FS	
Repeatability	± 0.3% of RO	
Zero Balance	5% of RO max.	
Zero Temp. Coefficient	± 0.03% RO/°C	
Span Temp. Coefficient	± 0.03% RO/°C	
Compensated Temp. Range	-15°C to 70°C	Wider range available to order
Operating Temp. Range	-20°C to 80°C	Wider range available to order
IP Rating	IP65	
Bridge Resistance	350 ohm nom.	
Excitation	5V, 10V	