

## A4200 & A4600 WEIGHCHECK LOAD CELL (U.S. & METRIC)

### FEATURES & BENEFITS

- Capacity ranges from 2.5K to 50K lbf (11.1 to 222 kN)
- High output – 4 mV/V
- Self-centering in all directions
- High safe side load – to 400%
- Standardized output –  $\pm 0.1\%$
- Zinc plated (A4200) or stainless steel (A4600)
- Factory assembled for easy field installation
- Static/dynamic/in-motion capabilities
- Low height – 4.0 in (101.6 mm) for 2.5K, 5K, 10K (11.1, 22.2, 44.5 kN); 5.0 in (127 mm) for 25K, 50K lbf (111, 222 kN)

### SPECIFICATIONS

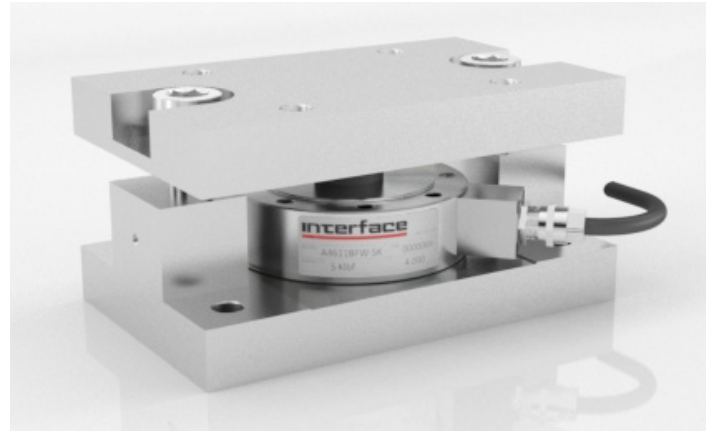
ACCURACY – (MAX ERROR)		
Static Error Band – %FS		$\pm 0.05$
Nonlinearity – %FS		$\pm 0.05$
Hysteresis – %FS		$\pm 0.03$
Nonrepeatability – %RO		$\pm 0.02$
Creep, in 20 min – %		$\pm 0.025$
TEMPERATURE		
Compensated Range	°C	-10 to +45
	°F	+15 to +115
Operating Range	°C	-55 to +90
	°F	-65 to +200
Effect on Output – % / deg	°F	$\pm 0.0008$
Effect on Zero – %RO / deg	°F	$\pm 0.0008$
ELECTRICAL		
Rated Output – mV/V	2.5K lbf (11.1 kN)	2.000 $\pm 0.1\%$
	5K-50K lbf (22.2-222 kN)	4.000 $\pm 0.1\%$
Zero Balance – %RO		$\pm 1.0$
Bridge Resistance – Ohms		350
Excitation Voltage – VDC MAX		20
Insulation Resistance – Megohm		5000
MECHANICAL		
Calibration		Compression
Safe Overload – % CAP		150
Cable length	ft	30
	m	9.1
Material	A4200	Zinc plated
	A4600	Stainless steel plated

### OPTIONS\*

- Zinc plated (A4200)
- Stainless steel (A4600)
- Special cable length

\*See appendix for more technical info.

### STANDARD CONFIGURATION



MODEL A4200 & A4600 (Shown)

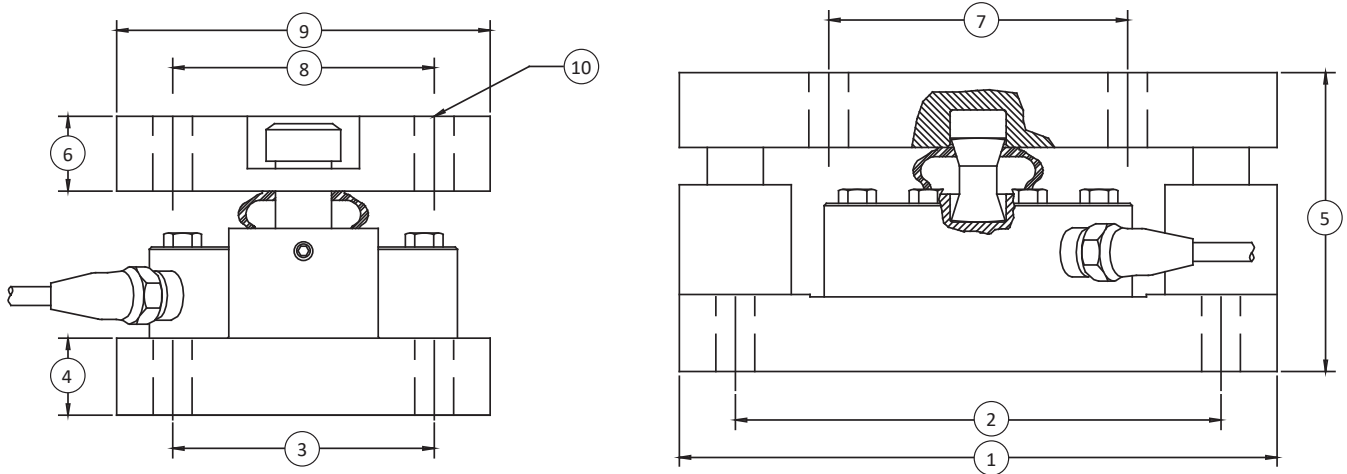
Mount Model	Material	Range		Safe Side Load		
		lbf	kN	lbs	kg	(% range)
M4200-1	Alloy	5K	22.2	20K	9,072	400
M4200-1	Alloy	10K	44.5	20K	22.7K	200
M4200-2	Alloy	25K	111	50K	22.8K	200
M4200-2	Alloy	50K	222	50K	22.8K	100
M4600-1	Stainless	5K	22.2	10K	4,536	200
M4600-1	Stainless	10K	44.5	10K	4,536	100
M4600-2	Stainless	25K	111	25K	11.3	100
M4600-2	Stainless	50K	222	25K	11.3	50

### ACCESSORIES

- 9300
- 9390
- UMC600
- SGA
- Junction box

International System of Units (SI) dimensions and capacities are provided for conversion only. Standard products have U.S. capacities and dimensions. SI capacities available upon special request and at an additional cost.

## A4200 & A4600 WEIGHCHECK LOAD CELL (U.S. & METRIC)



### DIMENSIONS

See Drawing	CAPACITY			
	A4211, A4611		A4221, A4621	
	U.S. (lbf)	Metric (kN)	U.S. (lbf)	Metric (kN)
	2.5K, 5K, 10K	11.1, 22.2, 44.5	25K, 50K	111, 222
	in	mm	in	mm
(1)	8.00	203.2	10.00	254.0
(2)	6.50	165.1	7.75	196.9
(3)	3.50	88.9	4.50	114.3
(4)	1.00	25.4	1.25	31.8
(5)	4.00	101.6	5.00	127.0
(6)	1.00	25.4	1.25	31.8
(7)	4.00	101.6	5.00	127.0
(8)	3.50	88.9	4.50	114.3
(9)	5.00	127.0	6.00	152.4
(10)	0.52	13.2	0.78	19.8