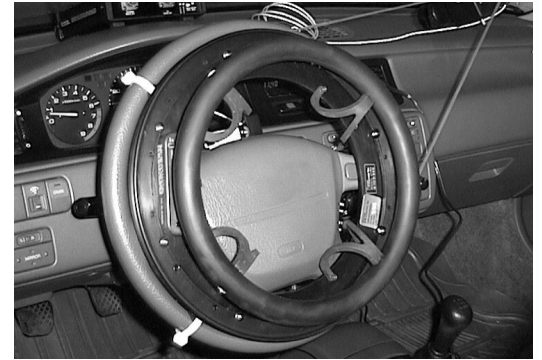


# AIR BAG COMPATIBLE STEERING EFFORT SENSOR

Air Bag Compatible Steering Effort Sensor (01184) offers continuous, non-contact torque data from the very low mass, rotating steering sensor to a stationary receiver.

This system provides a portable, state-of-the-art steering effort sensor. It can be used in the field, laboratory, or on the test track to measure steering torque and angle requirements.



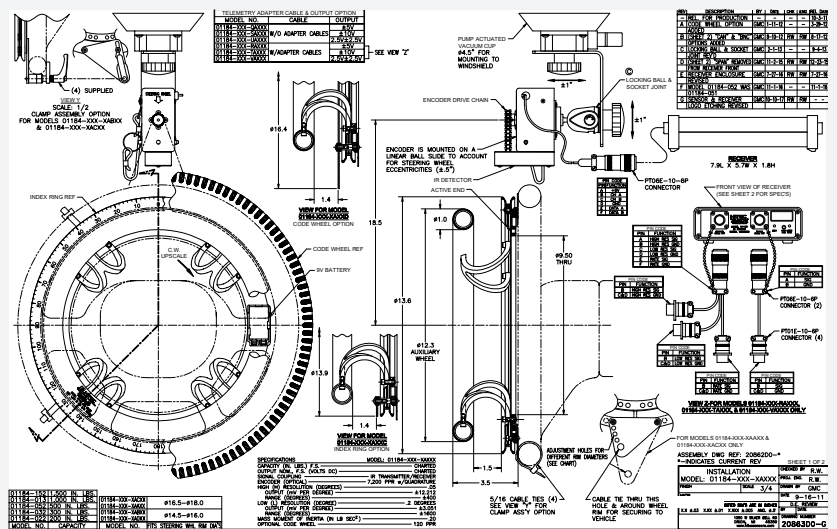
## FEATURES

- Low system mass
- Airbag compatibility
- No drag from bearings or slip rings
- Quick and easy installation
- Digital infrared telemetry to eliminate signal interference

### Optional Features

- Complete DAQ system with interface software (ref model 90422).

## DIAGRAM



To find out more visit [hitecsensors.com](http://hitecsensors.com)

HDS\_01184\_112420/01



# AIR BAG COMPATIBLE STEERING EFFORT SENSOR

## SPECIFICATION

PARAMETER	RANGE
Capacity (in. lbs.) (FS)	200, 500, 1000, 1500
Output (FS)	± 5 volts DC nom.
Signal Coupling	FM Transmitter/Receiver
Encoder (optical)	7,200 PPR w/Quadrature
High (H) Resolution (°C)	.05
Max Range (°C)	± 409
Output at max range (volts)	± 5
Low (L) Resolution (°C)	0.2
Max Range (°C)	± 1638
Output at max range (volts)	± 5
Rate (°C/sec)	2.8
Range (°C/sec)	± 1000
Output at max range (volts)	± 5
Mass Moment of Inertia	.20 lb/sec <sup>2</sup>

HITEC Sensor Developments, Inc. | 10 Elizabeth Drive  
Chelmsford, MA 01824 | United States of America  
T +1 978 742 9032 | F +1 978 742 9033

[hitecsensors.com](http://hitecsensors.com)