

ITCA TENSION AND COMPRESSION LOAD CELL (U.S. & METRIC)

FEATURES & BENEFITS

- Ranges from 1 to 150 Metric Tons (MT) (2.2K to 330.6K lbf)
- Stainless steel construction
- IP66 Environmental Protection (IP67 and Submersible Options)

OPTIONS

- Custom ranges and sizes available
- Imperial threads
- Hazardous Area certified - Explosion Proof (Ex d) and Intrinsically Safe (Ex i)
- Submersible versions available
- TEDS option
- Internal amplifier

ACCESSORIES

- Spherical rod end bearings

STANDARD CONFIGURATION

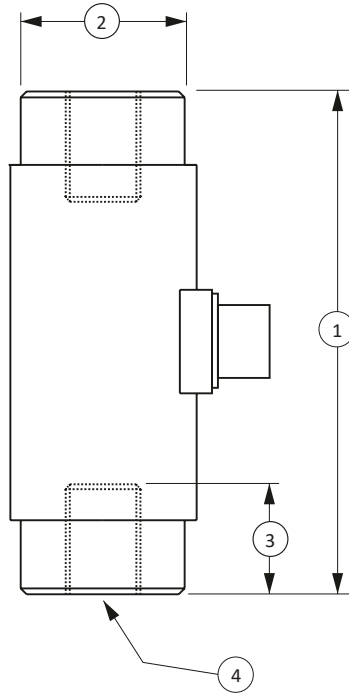


MODEL ITCA-20MT (Shown)

SPECIFICATIONS

CAPACITY							
U.S. (lbf)	2.2K	4.4K, 6.6K, 11K	16.5K, 22K	44K, 66.1K	110.2K 165.3K	220.4K, 330.6K	
Metric Tons (MT)	1	2, 3, 5	7.5, 10	20, 30	50, 75	100, 150	
ACCURACY – (MAX ERROR)							
Nonrepeatability – %RO	±0.1		±0.1	±0.1	±0.1	±0.1	±0.1
TEMPERATURE							
Compensated Range	°F	+14 to +122	+14 to +122	+14 to +122	+14 to +122	+14 to +122	+15 to +115
	°C	-10 to +45	-10 to +45	-10 to +45	-10 to +45	-10 to +45	-10 to +45
Operating Range	°F	-4 to +158	-4 to +158	-4 to +158	-4 to +158	-4 to +158	-4 to +158
	°C	-20 to +70	-20 to +70	-20 to +70	-20 to +70	-20 to +70	-20 to +70
Effect on Zero – %RO / deg	°C	<±0.01	<±0.01	<±0.01	<±0.01	<±0.01	<±0.01
Effect on Output – % / deg	°C	<±0.01	<±0.01	+0.<±0.01	<±0.01	<±0.01	<±0.01
ELECTRICAL							
Rated Output – mV/V (Nominal)		1.5	1.5	1.5	1.5	1.5	1.5
Excitation Voltage – VDC MAX		15	15	15	15	15	15
Bridge Resistance – Ohm (Nominal)		350	500	700	700	1400	1400
Zero Balance – %RO		±1.0	±1.0	±1.0	±1.0	±1.0	±1.0
Insulation Resistance – Megohm		> 500	> 500	> 500	> 500	> 500	> 500
MECHANICAL							
Safe Overload – %CAP		±150	±150	±150	±150	±150	±150
Weight	lbs	0.8	0.8, 1.5, 1.5	2.8	7.2, 44	44, 78.7	78.7, 89.2
	kg	0.4	0.4, 0.7, 0.7	1.3	3.3, 20	20, 35.7	35.7, 40.5
Calibration		Tension and Compression					
Material		Stainless Steel					

ITCA TENSION AND COMPRESSION LOAD CELL (U.S. & METRIC)



DIMENSIONS

See Drawing	CAPACITY											
	U.S. (lbf)	Metric (MT)	U.S. (lbf)	Metric (MT)	U.S. (lbf)	Metric (MT)	U.S. (lbf)	Metric (MT)	U.S. (lbf)	Metric (MT)	U.S. (lbf)	Metric (MT)
	2204, 4409	1, 2	6613 11,023	3, 5	16,534 22,046	7.5, 10	44,092	20	66,138, 110,231	30, 50	16,5346, 2204,62, 330,693	75, 100, 150
	in	mm	in	mm	in	mm	in	mm	in	mm	in	mm
(1)	2.9	76	3.3	84	4.25	108	7.9	203	13.9	355	18	458
(2)	1.2	31	1.4	38	1.7	44	2.2	57	4.4	114	5.1	130
(3)	0.6	16	0.8	22	1.14	29	1.9	50	3.5	89	3.9	100
(4)	M12 x 1.25		M20 x 1.5		M24 x 2		M36 x 3		M64 x 4		M100 x 3	